

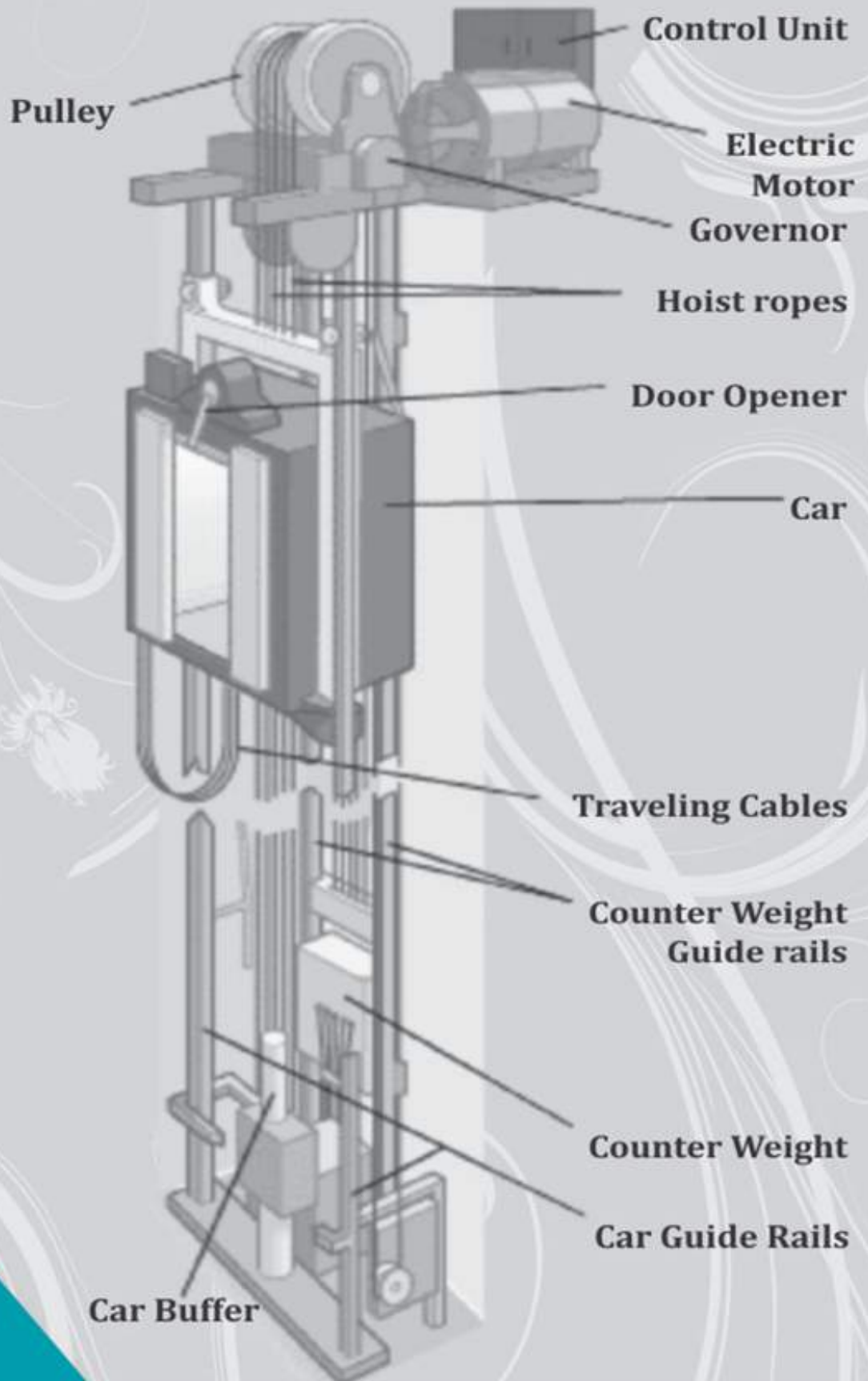


*Excellence in Quality!*

*Excellence in Service !!*

*Excellence in Safety !!!*

## Elevator and Shaft







# **ABI Elevators**

Elevating your standard of living

## **Genesis & Establishment**

Abi elevator was established in the year 2005 with registered office at Mumbai. Mr. selvan was the founder of Abi elevators. and it has built its reputation for its product quality, delivery commitments and effective after sales service

## **Objective & Focus:**

We have set new benchmarks in the industry and we have believe customer first philosophy. the company has a clear focus on achieving and sustaining global leadership with a vibrant and performance driven environment with excellent opportunities for all round

## **Good Management Practices:**

We integrate professional management, and ethical practices for enhanced performance. We optimize and customize operations for maximum efficiency and overall cost saving improved customer service.





## PASSENGER LIFT

We are a leading provider of **Passenger Elevator**, which are designed in accordance with industry standards. Available at highly competitive rates, our products are made from the most refined quality raw material and latest technology at our manufacturing processes. The offered products are widely demanded in offices, residence buildings, public places and related areas. Known for optimum utility, our elevators are greatly sought by a number of customers.

### Features:

- Longer life
- Reliable operation
- Sturdiness



## GOODS LIFTS

We are offering a wide range of **Goods Elevator**, which are are greatly popular among customers. Our expert team of professionals design these products employing latest tools and machines. Considering that good and commodities are moved in a vertical direction, these elevators are designed accordingly in sync with industry standards. All our products are well tested to ensure less maintenance and durability.

### Features:

- Longer service life
- Sturdy construction
- Durable

## HOSPITAL LIFT

We are one of the prominent manufacturers and suppliers of precisely designed **Patient Elevators** that is vastly used in hospitals. Spacious and easy to operate, these lifts are manufactured from supreme quality raw materials. Offered lifts are widely known for allowing patients to be lifted and transferred from one place to the other, with minimal efforts. The proposed assemblage is easy to install and requires less maintenance. Our company is one of the preferred choices of our customers for proffering **Hospital Lift** that can be availed with manual or automatic doors. Vastly demanded in hospitals and doctors' clinics, these magnificent lifts are massively acclaimed for their low running cost and optimum performance

### Features:

- Reliable performance
- Rugged in construction
- Spacious
- Supreme finishing
- Ruggedly constructed







## HOME LIFTS

We are one of the eminent manufacturers and suppliers of an extended collection of **Home Lifts**. Specifically designed and developed at our end, these lifts are highly acclaimed for their reliable performance, rugged construction and aesthetic looks. Customers can acquire the selection in multiple specifications, to meet their diverse requirements.

### Features:

- Consistent operation
- Easy to install
- Minimal maintenance required



## CAR LIFT

With high load bearing capacity, the offered range of **Cars Elevators** is one of the finest that are available in the market. For the purpose of providing the finest, we engage in the utilization of high grade raw materials and modern machines, in accordance with the set industry norms and guidelines. Owing to this, the product's standard of quality never deteriorates.

### Features:

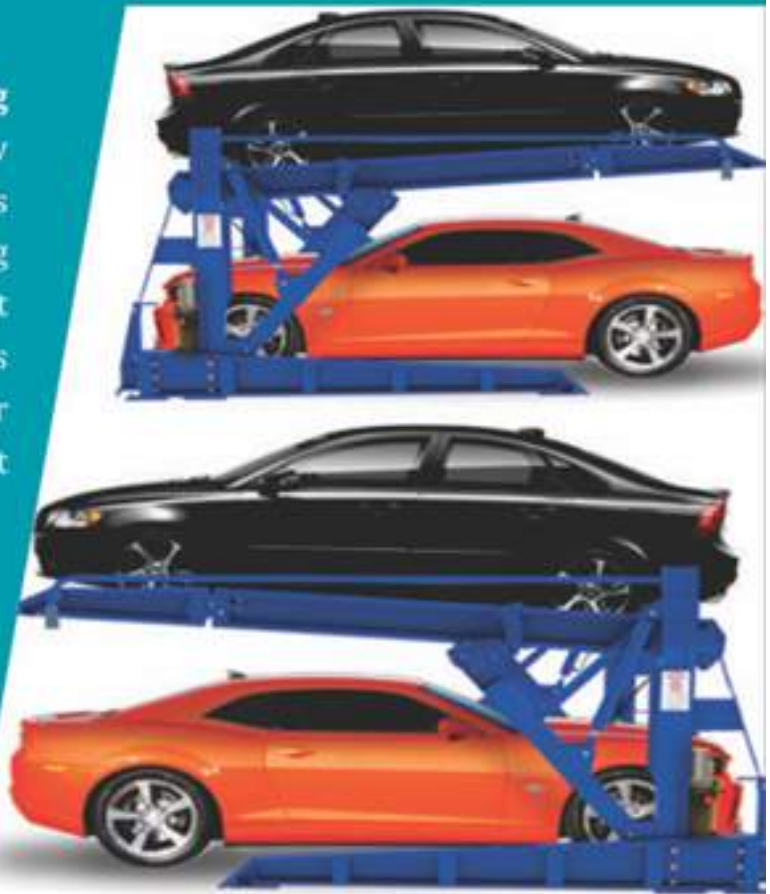
- Superior performance
- Impeccable service life
- User friendly

## STACK PARKING LIFTS

We are offering high quality **Car Parking Lifts**. Manufactured using the finest raw materials and modern machines, the product's functionality, functional life, load bearing capacity and precision, is quite high. Marked at the best rate possible, demand for this range is quite high. In addition, the offered range, for quality maintenance, is made abiding by the set industry norms and guidelines.

### Features:

- High precision
- Impeccable functionality
- Longer functional life



## HYDRAULIC LIFTS

We are widely known in the market for our ability to offer high quality **Hydraulic Lifts** to customers. These elevators are designed in compliance with the international quality standards, under the expert guidance of our team of experts. The elevators offered by us do not require maintenance, thus, are widely preferred by the clients.

### Features:

- Tough construction
- Durable standards
- Perfect functioning







## MACHINE ROOM LESS LIFTS MRL

Keeping track with market development, we are engaged in offering the best quality **MRL Lifts**. These products are manufactured using supreme quality raw material with the help of advanced manufacturing process under the guidance of our skilled professionals. To meet various requirements of clients, we offer products in various dimensions. In addition to this, our offered quality tested range is highly appreciated in the market due to features given below.

### Features:

- Dimensional accuracy
- Durability
- Reliability

## CAPSULE LIFTS



We are an established firm engaged in offering the best quality of **Panoramic Capsule Lift**. These are manufactured at our high-end infrastructure facility using components that are approved for their quality. These small-sized lifts are capsule-like in their appearance. These are known for their capacity to bear excess load. These lifts operate smoothly in a noise-free manner and have minimal needs for regular servicing and maintenance. These lifts are available to clients at leading market prices.

### Features:

- Overload tested
- Noise-free operation
- Low maintenance needs



## DUMBWAITER LIFTS

Our firm is renowned in the market for **Dumbwaiters Lifts**. Our lifts are highly admired due to their longer life and easy fitting. This lift is developed by our professionals using the quality component that is sourced from industry proficient vendors of market. We present our products at low prices.

### Features:

- High reliability
- Less maintenance
- Enhanced service life



## CHAIR LIFT

Many people have to continue living in their own home, but lack of frequent mobility makes it difficult to use stairs in due course of time. We provide safe, reliable and easy to use chair lifts as mobility and accessibility solutions for the difficulties our customers face their regular lives. Staircase lift comes up with some good features like:

- Maintenance free DC power
- Easy to use joystick operation
- Digital status display
- Smooth start/stop action
- Lockable isolation switch
- Swivel Seat
- Fold-up seat & footrest
- Infra-red remote controls
- Safety cut-out sensors
- Electronic and mechanical braking systems
- Whisper-quiet operation



## Types of cabin





## Types of paranomic cabin



## Types of Doors

### Swing Doors



### Center Opening Doors



### Telescopic Doors





## Glass Doors

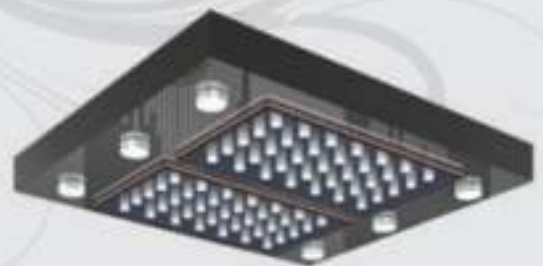


## Collapsible Doors



## Imperforated Doors















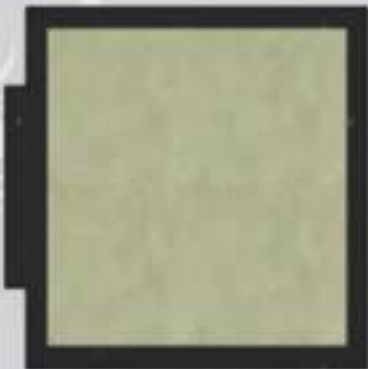
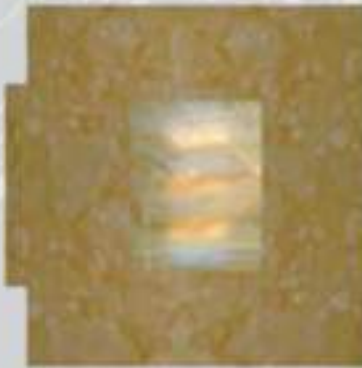


Control Panel





## Types of Flooring





# Get in Touch today



**Mr.Selvan J Nadar. MBA**  
Managing Director

Indira Nagar No:1,  
J.N. Road,  
Mulund-[W]  
Mumbai - 80

Mobile : 0 98198 28770

Mobile : 97684 39262

Web : [www.abielelevator.com](http://www.abielelevator.com)

Support : [info@abielelevator.com](mailto:info@abielelevator.com)